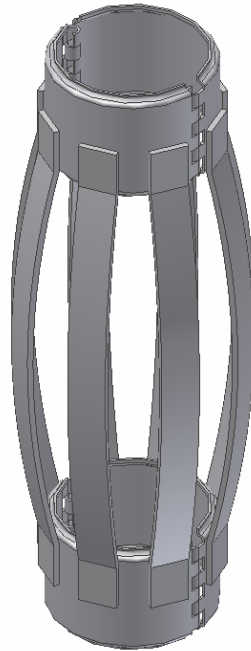




Industrial Rubber Inc.

3609 S. High Oklahoma City, Oklahoma 73129
Phone 405/632-9783 Fax 405/634-9637

Hinge Type Centralizers

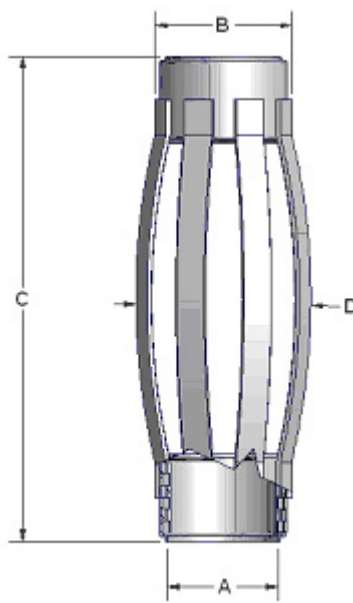


Industrial Rubber's Hinge-Type Centralizers feature channel-formed collar rings with hinges placed within the channel to eliminate hinge damage. This Construction assures that hinges will not rupture while the casing is being run regardless of hole direction or irregularities in formations .

Bow springs are made of 1 1/4" x 3/16" 1095 spring steel.

The design of the split collars and narrow bow springs provide maximum effective centralizing of the casing with minimum obstruction to annular flow.

Industrial Rubber Hinge-Type Centralizers are available in sizes 2 3/8" through 20"



Size	A	B	C	D0	D1	D2	D3	D4	D5
2 3/8"	2.625	3.625	19.625	4.375	4.750	5.125	5.875	6.875	8.375
2 7/8"	3.125	4.125	19.625	4.875	5.250	5.625	6.375	7.375	9.375
3 1/2"	3.750	4.750	19.625	5.125	5.875	6.250	7.125	8.125	9.875
4 1/2"	4.750	5.750	19.625	6.500	6.750	7.125	7.875	8.875	10.125
5 1/2"	5.750	6.750	19.625	7.375	7.750	8.125	9.000	10.000	11.625
6 5/8"	6.875	7.875	19.625	8.625	8.875	9.250	10.250	11.250	13.000
7"	7.250	8.250	19.625	9.000	9.250	9.625	10.500	11.500	13.250
7 5/8"	7.875	8.875	19.625	9.750	10.000	10.375	11.375	12.375	13.375
8 5/8"	8.875	9.875	19.625	10.625	11.000	11.375	12.125	13.125	15.000
9 5/8"	9.875	10.875	19.625	11.500	1.750	12.125	13.000	14.000	15.875
10 3/4"	11.000	12.000	19.625	12.875	13.125	13.500	14.250	15.375	16.500
11 3/4"	12.000	13.000	19.625	13.625	13.875	14.500	15.000	16.125	17.875
12 3/4"	13.000	14.000	19.625	14.500	14.750	15.000	15.875	17.000	18.250
13 3/8"	13.625	14.625	19.625	15.125	15.500	15.750	16.500	17.750	19.500
16"	16.250	17.250	19.625	18.125	18.500	18.875	19.375	20.375	22.250
18 5/8"	18.875	19.875	19.625						
20"	20.250	21.250	19.625						

Hinge-Type Centralizer	
Hinge Type Size	Part Number
2 3/8"	250-0023
2 7/8"	250-0027
3 1/2"	250-0034
4 1/2"	250-0044
5 1/2"	250-0054
6 5/8"	250-0065
7"	250-0070
7 5/8"	250-0075
8 5/8"	250-0085
9 5/8"	250-0095
10 3/4"	250-0106
11 3/4"	250-0116
12 3/4"	250-0126
13 3/8"	250-0133
16"	250-0160
18 5/8"	250-0185
20"	250-0200